

**How to book**

For inclusion in RA Magazine's paid Listings section for public and commercial galleries in the UK, call 020 7300 5657 or email [catherine.cartwright@royalacademy.org.uk](mailto:catherine.cartwright@royalacademy.org.uk). Readers should contact galleries directly for opening times

**LONDON Public**

**BARBICAN ART GALLERY / THE CURVE** Silk St, EC2, 0845 120 7520 [www.barbican.org.uk/artgallery](http://www.barbican.org.uk/artgallery) ⇒ Danish artist **Jeppe Hein** presents an alternative roller coaster, echoing the famously labyrinthine architecture of the Barbican, until 29/4 ⇒ **'Alvar Aalto: Through the Eyes of Shigeru Ban'**, until 13/5 ⇒ **Marjetica Potrč** 24/5–19/8

**THE BRITISH LIBRARY** 96 Euston Rd, NW1, 020 7412 7332 [www.bl.uk](http://www.bl.uk) ⇒ **'William Blake: Under the Influence'**. Small exhibition examining the art, life and work of the visionary poet, printmaker and artist, until 21/3 ⇒ **'A Poet in the Family: The Coleridge Archive'**, until 27/4 ⇒ **'Sacred: Discover What We Share'**. The World's greatest collection of Jewish, Christian and Muslim holy books 27/4–23/9

**COURTAULD INSTITUTE OF ART GALLERY** Somerset House, The Strand, WC2, 020 7848 2526 [www.courtauld.ac.uk](http://www.courtauld.ac.uk) ⇒ **'Guercino: Mind to Paper'**. Exhibition focused around an important group of 26 drawings by **Giovanni Francesco Barbieri** from the collection of Sir Robert Witt, until 13/5

**DULWICH PICTURE GALLERY** Gallery Rd, SE21, 020 8693 5254 [www.dulwichpicturegallery.org.uk](http://www.dulwichpicturegallery.org.uk) ⇒ **'Canaletto in England: A Venetian Artist Abroad 1746–1755'**. This major exhibition brings together paintings executed by **Canaletto** during the period he spent in England, until 15/4

**ESTORICK COLLECTION OF MODERN ITALIAN ART** 39a Canonbury Sq, N1, 020 7704 9522

[www.estorickcollection.com](http://www.estorickcollection.com) ⇒ **'Barbed Wit: Italian Satire of the Great War'**, until 18/3 ⇒ **'A Slap in the Face! Futurists in Russia'** 28/3–10/6

**FREUD MUSEUM** 20 Maresfield Gdns, NW3, 020 7435 2002 [www.freud.org.uk](http://www.freud.org.uk) ⇒ **'Reisemalheurs (Travel Woes)'**. An exhibition of paintings by **Vivienne Koorland**, curated by Tamar Garb 22/3–22/4

**GEFFRYE MUSEUM** 136 Kingsland Rd, E2, 020 7739 9893 [www.geffrye-museum.org.uk](http://www.geffrye-museum.org.uk) ⇒ **'Home and Garden: Part Three'**. Exhibition exploring the representation of urban domestic interiors and gardens in paintings from 1914 to 1960, until 24/6

**GUILDHALL ART GALLERY** Guildhall Yard, EC2, 020 7332 3859 [www.guildhall-art-gallery.org.uk](http://www.guildhall-art-gallery.org.uk) ⇒ **'William Powell Frith: Painting The Victorian Age'**, until 4/3 ⇒ **'A Mile of Style: Regency to 2007'** April–June

**IMPERIAL WAR MUSEUM LONDON** Lambeth Rd, SE1, 020 7416 5320 [www.iwm.org.uk](http://www.iwm.org.uk) ⇒ **'Camouflage'**. First major exhibition exploring the development of military camouflage from the First World War to the present day and its adaptation into popular culture 28/3–19/11 ⇒ **'The Falklands'** 16/5–31/12 ⇒ **'The Childrens' War'**, until March 2008

**MALL GALLERIES** The Mall, SW1, 020 7930 6844 [www.mallgalleries.org.uk](http://www.mallgalleries.org.uk) ⇒ **'The Pastel Society Annual Exhibition'**. Contemporary pastel paintings and drawings 28/2–11/3 ⇒ Exhibition by the **Royal Institute of Painters in Watercolours** 15/3–5/4 ⇒ Exhibition by the **Royal Society of Portrait Painters** 26/4–13/5

**NATIONAL GALLERY** Trafalgar Sq, WC2, 020 7747 2885 [www.nationalgallery.org.uk](http://www.nationalgallery.org.uk) ⇒ **'Tim Gardner: New Works'**, until 15/4 ⇒ **'Renoir Landscapes 1865–1883'**, until 20/5 ⇒ **'Leon Kossoff'**. Drawings, paintings and prints inspired by exhibitions and collections at the National Gallery and the Royal Academy 14/3–1/7

**NATIONAL PORTRAIT GALLERY** St Martin's Place, WC2, 020 7306 0055 [www.npg.org.uk](http://www.npg.org.uk) ⇒ **'Face of Fashion'**. Exhibition focusing on the portraits of five outstanding fashion photographers from Europe and America: **Mert Alas and Marcus Piggott, Corinne Day, Steven Klein, Paolo Roversi and Mario Sorrenti**, until 28/5 ⇒ **'Between Worlds: Voyages to Britain 1700–1850'** 8/3–17/6

**SOUTH LONDON GALLERY** 65 Peckham Rd, SE5, 020 7703 6120 [www.southlondongallery.org](http://www.southlondongallery.org) ⇒ **'About Nothing: Works on Paper 1962–2007'**. Hundreds of works by Swiss artist **John Armleder**, until 25/3 (closed 1/3) ⇒ **'Stay Forever and Ever and Ever'**. Group exhibition, curated by Andrew Renton 2/5–24/6

**TATE BRITAIN** Millbank, SW1, 020 7887 8888 [www.tate.org.uk](http://www.tate.org.uk) ⇒ **'Hogarth'**, until 29/4 ⇒ **'Basil Beattie RA'** 5/3–3/6 ⇒ **'Mark Wallinger: State Britain'**, until 27/8

**TATE MODERN** Bankside, SE1, 020 7887 8888 [www.tate.org.uk](http://www.tate.org.uk) ⇒ **Amrita Sher-Gil**, until 22/4 ⇒ **'Gilbert & George: Major Exhibition'**, until 7/5 ⇒ **'Level 2 Gallery: The Artist's Dining Room'** 2/3–15/4

**V&A** Cromwell Rd, SW7, 020 7942 2000 [www.vam.ac.uk](http://www.vam.ac.uk) ⇒ **'Surreal Things: Surrealism and Design'**

29/3–22/7 ⇒ **'Kylie: The Exhibition'**, until 10/6 ⇒ **'Uncomfortable Truths'**, until 17/6

**THE WALLACE COLLECTION** Hertford House, Manchester Sq, W1, 020 7563 9500 [www.wallacecollection.org](http://www.wallacecollection.org) ⇒ **'Xanto: Pottery-Painter, Poet, Man of the Italian Renaissance'**, until 15/4 ⇒ Exhibition by **Charlotte Hodes**, this year's Jerwood Drawing Prize winner, exploring some of the historical sources of the collection in a contemporary manner 3/5–24/6

**LONDON Commercial**

**ABBOTT AND HOLDER** 30 Museum St, WC1, 020 7637 3981 [www.abbottandholder.co.uk](http://www.abbottandholder.co.uk) ⇒ Post-war paintings by **Grete Marks** (1899–1981) 29/3–14/4 ⇒ **BADA Antiques and Fine Art Fair** 21–27/3

**ADAM GALLERY** 24 Cork St, W1, 020 7439 6633 [www.adamgallery.com](http://www.adamgallery.com) ⇒ Graphic works including monotypes, by the renowned Danish artist **Per Kirkeby** 13–31/3 ⇒ Graphic works by **Marino Marini** (1901–80) 11/4–3/5

**ADVANCED GRAPHICS LONDON** 32 Long Lane, SE1, 020 7407 2055 [www.advancedgraphics.co.uk](http://www.advancedgraphics.co.uk) ⇒ **'Celebrating 40 Years of the Print Studio'**. Including **Craigie Aitchison RA, Basil Beattie RA, Neil Canning, Anthony Frost RA, John Gray, Clyde Hopkins, Albert Irvin RA, Trevor Jones, Anita Klein and Ray Richardson**. Contact gallery for dates

**ALAN CRISTEA GALLERY** 31 Cork St, W1, 020 7439 1866 [www.alancristea.com](http://www.alancristea.com) ⇒ **'Alan Cristea Relaunch Exhibition'**. Work by **Gillian Ayres**



**From left to right**  
'Aurora', c.1620, by Guercino (Giovanni Francesco Barbieri), at the Courtauld Institute of Art Gallery; 'Dream Painting - She Flew Over To Comfort Me', 2006, by Vivienne Koorland, at the Freud Museum; 'Lares', 1929–30, by Paul Nash, at the Geffrye Museum; 'The Grands Boulevards' (Les Grands Boulevards), 1875, by Pierre-Auguste Renoir, at the National Gallery

**RA, Michael Craig-Martin RA, Richard Hamilton and Julian Opie** among many other artists 18–12/5 ⇒ Paintings, prints and monoprints by **Gillian Ayres RA** 16/5–16/6

**ALBEMARLE GALLERY** 49 Albemarle St, W1, 020 7499 1616 www.albemarlegallery.com ⇒ New paintings by Spanish artist **Alfredo Roldan** 1–24/3 ⇒ New work by Bosnian painter **Mersad Berber** 29/3–28/4 ⇒ Paintings, drawings and etchings by Scottish figurative painter **Stuart Luke Gatherer** 3–26/5

**ART FIRST** First Floor, 9 Cork St, W1, 020 7734 0386 www.artfirst.co.uk ⇒ New work by **Clement McAleer** and **Partou Zia**, until 12/4 ⇒ New work by **Alex Lowery** and **Helen MacAlister** 17/4–17/5 ⇒ New work by **Eileen Cooper RA** 22/5–28/6

**BANKSIDE GALLERY** 48 Hopton St, SE1, 020 7928 7521 www.banksidegallery.com ⇒ 'Royal Watercolour Society Spring Exhibition'. With featured artist **Jonathan Cramp** 16/3–15/4 ⇒ 'Royal Society of Painter-Printmakers Annual Exhibition' 3/5–3/6

**BEAUX ARTS LONDON** 22 Cork St, W1, 020 7437 5799 www.beauxartslondon.co.uk ⇒ 'St Ives'. Mixed exhibition 1–24/3 ⇒ Work by **Sir Terry Frost RA** 1/4–5/5 ⇒ Recent Acquisitions 9/5–9/6

**BELGRAVIA GALLERY** 45 Albemarle St, W1, 020 7495 1010 www.belgraviagallery.com ⇒ 'Photography: Black and White'. Contemporary photographs with work by **Jürgen Schadeberg** and others, March ⇒ 'Monroe Hodder: Oils'. Large abstract oil paintings based on landscapes, April

**BOUNDARY GALLERY** 98 Boundary Rd, NW8, 020 7624 1126 www.boundarygallery.com ⇒ Works by **Paul Bloomer** inspired by the beauty of the Shetland Islands 9/3–21/4 ⇒ 'Boundary Gallery Figurative Art Prize' 27/4–12/5 ⇒ 'David Bomberg (1890–1957)'. 50th anniversary exhibition 18/5–23/6

**BROWSE AND DARBY** 19 Cork St, W1, 020 7734 7984 www.browseanddarby.co.uk ⇒ **Gwen John** 14/3–5/4 ⇒ New work by **Patrick George** 12/4–4/5 ⇒ Exhibition to celebrate the publication of the catalogue raisonné of **Euan Uglow's** work 10/5–1/6

**CAROLINE WISEMAN MODERN ART** 26 Lansdowne Gdns, SW8, 020 7622 2500 www.carolinewiseman.com ⇒ 'Modern Art Now: From Hepworth to Hockney to Hirst'. Paintings by 30 major British artists to accompany the book, March until May

**THE CATTO GALLERY** 100 Heath St, NW3, 020 7435 6660 www.catto.co.uk ⇒ Paintings of France and Italy by **Nick Verrall** 13/3–1/4 ⇒ Figurative work by **Aldo** 3–15/4 ⇒ New paintings by **Dennis Syrett** 17/4–3/5

**CONNAUGHT BROWN** 2 Albemarle St, W1, 020 7408 0362 www.connaughtbrown.co.uk ⇒ Specialising in Impressionist, Post-Impressionist, and modern master paintings, drawings and sculptures, ongoing

**CURWEN AND NEW ACADEMY GALLERY** 34 Windmill St, W1, 020 7323 4700 www.curwengallery.com ⇒ **Katherine Holmes** and **Thirza Kotzen** 8–31/3 ⇒ **John Brokenshire** and **Sinéid Codd** 5–28/4 ⇒ **Chloë Fremantle** and **Colin Wilkins** 2–25/5

**CYNTHIA CORBETT GALLERY** 15 Claremont Lodge, 15 The Downs, SW20, 020 8947 6782 www.thecynthiacorbettgallery.com ⇒ **FORM** Olympia, London 1–4/3 ⇒ **The Affordable Art Fair** Battersea 15–19/3 ⇒ **H. Craig Hanna: Three Yellows**. No. 5 Blenheim Crescent, Notting Hill 12–25/3 ⇒ **Klari Reis: Under the Microscope**, Gallery 27, Cork St 8–19/5

**FARMILOFIUMANO** 27 Connaught St, W2, 020 7402 6241 www.farmilofumano.com ⇒ **FORM** Olympia, London. With work by **Angelo Brotto**, **Yves Klein**, **Jenny Yu-Chen Liu** and **David Underly** 1–4/3 ⇒ 'La Passeggiata'. Paintings of café society including work by Palermo artist **Gianni Allegra** 16/5–6/6

**THE FLEMING COLLECTION** 13 Berkeley St, W1, 020 7409 5730 www.flemingcollection.co.uk ⇒ 'Consider the Lilies: Scottish Painting 1910–1980', until 5/4 ⇒ 'Firm Favourites: Highlights and Recent Acquisitions from The Fleming Collection' 24/4–1/9

**THE GALLERY IN CORK STREET** 28 Cork St, W1, 020 7437 2812 www.galleryincorkstreet.com ⇒ 'Reflections on India'. Evocative work by leading Indian artist **Sarbani Sen**, depicting the lesser-known side of India, from the bustling markets to storm clouds over the Himalayas 26–31/3

**THE GALLERY, PRINCE'S DRAWING SCHOOL** 19–22 Charlotte Rd, EC2, 020 7613 8527 www.princesdrawingschool.org ⇒ 'Ivy Smith: Drawings for Paintings'. An exhibition of working drawings made from life, as source material for the artist's often large-scale figure compositions 15–30/3

**GREENWICH PRINTMAKERS GALLERY** 1A Greenwich Market, SE10, 020 8858 1569 www.greenwich-printmakers.org.uk ⇒ New original prints by members of the Greenwich Printmakers Association, with artists featured fortnightly: **Kevin Wright** 27/2–11/3, **Barbara Zalecki** 13–25/3, **Emiko Aida** 27/3–8/4, **Sowako Ando** 10–22/4, **Margaret Ashman** 24/4–6/5, **Mychael Barrat** 8–20/5, **Aimee Birnbaum** 22/5–3/6

**THE GROSVENOR GALLERY** 21 Ryder St, SW1, 020 7484 7979 www.grosvenorgallery.com ⇒ 'Indian Art Part III: Here and Now'. Featuring **Atul Dodiya**, **Anju Dodiya**, **Baiju Parthan**, **Shibu Natesan**, **Anjum Singh**, **Bharti Kher**, **Jitish Kallat**, **C. Mazumdar**, **Jayashree Chakravarty**, **Rajnish Kaur** and **T.V. Santhosh**, until 11/3 ⇒ 'Rameshwar Broota and The Progressives'. Gulf Art Fair, Dubai 8–10/3 ⇒ Solo exhibition by **Hema Upadhyay** May

**HART GALLERY** 113 Upper St, N1, 020 7704 1131 www.hartgallery.co.uk ⇒ New paintings by **Lewis Noble** and new ceramics by **Charles Bound** 22/3–11/4

⇒ New work by Australian printmaker **G.W. Bot** 26/4–16/5 ⇒ Mixed exhibition of work by gallery artists 17/5–6/6

**HIGHGATE FINE ART** 26 Highgate High St, N6, 020 8340 7564 www.oddart.com ⇒ Original lithographs by artists **Duffy**, **Cocteau**, **Chagall**, **Matisse**, **Picasso**, **Miró** and **Dalí** 28/2–17/3 ⇒ 'The Uncompromising Pursuit of Excellence'. Still life masterpieces by **Arnold Toubeix** 21/3–14/4 ⇒ 'A Painter's Landscape'. Work by **Bernadette Ash** 8/4–5/5 ⇒ 'Still Life: Pure and Simple'. Work by **Arthur Easton** 9–26/5

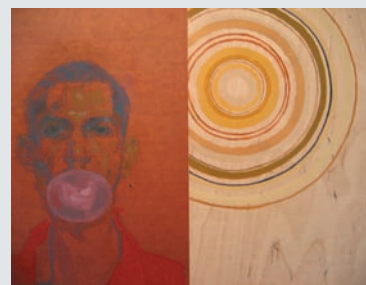
**IAP FINE ART** 65 Roman Rd, E2 / The Organ Factory, Swanscombe Rd, W11, 0870 850 5512 www.iapfineart.com ⇒ Ongoing exhibitions of new paintings by **Chris Gollon** and selected works by **Maggi Hambling**. For further information visit: [www.chrisgollon.com](http://www.chrisgollon.com) [www.maggihambling.com](http://www.maggihambling.com)

**THE ILLUSTRATION CUPBOARD** 22 Bury St, SW1, 020 7976 1727 www.illustrationcupboard.com ⇒ Classic contemporary book illustration from around the world, ongoing

**THE JERSEY GALLERIES** Osterley House, Osterley Park, Jersey Rd, Isleworth, TW7, 020 8232 5050 www.nationaltrust.org.uk ⇒ 'Prints in the Park'. New work on a wide range of themes, including etchings, monoprints and linocuts by the **Richmond Printmakers** 16/5–3/6

**JILL GEORGE GALLERY** 38 Lexington St, W1, 020 7439 7319 www.jillgeorgegallery.co.uk ⇒ Paintings and drawings by **Kathryn Ensall**, until 9/3 ⇒ Aluminium wall sculptures by **Mark Firth** 13/3–13/4 ⇒ 'Cities of Holy Dreams'. Paintings, drawings and prints by **Chris Orr RA** 17/4–18/5

**JOHN ADAMS FINE ART AT EBURY GALLERIES** 200 Ebury St, SW1, 020 7730 8999 www.johnadamsfineart.com ⇒ 'Highlands and Islands'. Solo



From left to right  
'Indolent Lake - Shantiniketan', 2006, by Sarbani Sen, at The Gallery in Cork Street; 'Nurse', 2007, by Eileen Cooper RA, at Art First; 'Flowers in a Vase', c.1942, by Ivon Hitchens RA, at Jonathan Clark Fine Art; 'Man Blowing Bubbles', 2006, by H. Craig Hanna, at the Cynthia Corbett Gallery

exhibition of contemporary landscapes in the highlands and islands of Scotland by **Mairi Clark** 13–27/3

**JOHNNY VAN HAEFTEN LTD**  
13 Duke Street, St James's, SW1, 020 7930 3062 www.johnnyvanhaefte.com  
⇒ Dutch and Flemish seventeenth-century old master paintings, ongoing

**JONATHAN CLARK FINE ART**  
18 Park Walk, SW10, 020 7351 3555 ⇒  
'The Flower Paintings'. Exhibition by **Ivon Hitchens RA** (1893–1979) 25/4–18/5

**KINGS ROAD GALLERY**  
436 Kings Rd, SW10, 020 7351 1367 www.kingsroadartgallery.com  
⇒ Paintings by **Yin Xin**, blending Chinese origins and European influences 1–26/3 ⇒ New paintings from her continuous travels by **Susan Jayne Hocking** 29/3–23/4 ⇒ Colourful landscape paintings by Madrid-based artist **Maria Amparo** 26/4–21/5

**LINDA BLACKSTONE GALLERY**  
1/0 13 High St, Pinner, HA5, 07860 543535 ⇒ **Affordable Art Fair** Battersea 15–18/3 ⇒ **LAPADA 'Objects of Desire'**, Royal Academy of Arts 10–13/5

**LLEWELYN ALEXANDER GALLERY**  
124–126 The Cut, SE1, 020 7620 1322 www.llewellynalexander.com ⇒ **'Jeremy Barlow: One Man Show'**. French and Italian landscapes in oil 15–31/3 ⇒ **'A Million Brushstrokes'** Over 500 miniatures in oil, watercolour and pastel 5–30/4 ⇒ **'Bruce Yardley: One Man Show'**. Landscapes, café scenes and London views in oil 10–31/5

**MANYA IGEL FINE ARTS**  
21–22 Peters Ct, Porchester Rd, W2, 020 7229 1669/8429 www.manyaigelfinearts.com ⇒ **FORM London** 1–4/3 ⇒ **Chelsea Art Fair** 19–22/4 ⇒ **LAPADA** at the Royal Academy. Works by RAs past and present, members of the NEAC and other well-known artists 10–13/5

**MARLBOROUGH FINE ART**  
6 Albemarle St, W1, 020 7629 5161 www.marlboroughfineart.com ⇒ Recent work by **Daniel Enkaoua** and

sea drawings by **Maggi Hambling** 15/3–5/4 ⇒ Monoprints by **Tony Bevan** and etchings by **Frank Auerbach** 13/4–12/5 ⇒ **'Euan Uglow Retrospective'** 16/5–15/6

**MEDICI GALLERY** 5 Cork St, W1, 020 7495 2565 www.medicigallery.co.uk ⇒ Exhibition of work by **Graeme Wilcox** 28/2–22/3

**THE MILLINERY WORKS GALLERY**  
87 Southgate Rd, N1, 020 7359 2019 www.millineryworks.co.uk  
⇒ **'Philip Pank: A Passion for Colour'**. First show since the artist's death in 1991, until 18/3 ⇒ **'Ceri House: Personal Paintings'** 28/3–22/4 ⇒ Paintings by **Bert Kitchen** 2–20/5

**NEW GRAFTON GALLERY**  
49 Church Rd, SW13, 020 8748 8850 www.newgraffton.com ⇒ Three-man show of artists new to the gallery; **Serena Rowe**, **Ian Hargreaves** and **Liz Hough** 13–31/3 ⇒ Original, surreal, and imaginative work by **David Eustace** 3–28/4 ⇒ **Mark Adlington** and **Mungo Powney** 1–26/5

**NORMAN ADAMS LTD.**  
8–10 Hans Rd, SW3, 020 7589 5266 www.normanadams.com ⇒ **'Antiques for the Future II'**. A selling exhibition of contemporary furniture by Britain's best designer-makers 21/2–14/3

**OSBORNE SAMUEL** 23a Bruton St, W1, 020 7493 7939 www.osbornesamuel.com ⇒ Paintings by **John Blackburn** 1–31/3 ⇒ **London Original Print Fair** 25–29/4 ⇒ Paintings and drawings by **Keith Vaughan** 10/5–2/6

**P. & D. COLNAGHI & CO. LTD.**  
15 Old Bond St, W1, 020 7491 7408, www.colnaghi.co.uk/www.ottojakob.com ⇒ The leading German artist/jeweller **Otto Jakob** unveils his latest collection in his first show in London 26/4–5/5

**PIERS FEETHAM GALLERY**  
475 Fulham Rd, SW6, 020 7381 3031 www.piersfeethamgallery.com ⇒ **'Sea Dreaming'**. Recent paintings and constructions by **Derek Nice** 27/2–17/3 ⇒ **'Around the Shipping Forecast'**.

Visual exploration of the shipping forecast areas of the British Isles by **Caroline McAdam Clark** 21/3–14/4 ⇒ **'Dreams and Mythologies'**. Charcoal drawings by **Paul Rumsey** 18/4–5/5

**PORTAL GALLERY**  
43 Dover St, W1, 020 7493 0706 www.portal-gallery.com  
⇒ **'Portal Painters Special Exhibition'**. Celebrating the move to 15 New Cavendish St, Marylebone High St, in early April

**RAFAEL VALLS LIMITED**  
6 Ryder St, SW1, 020 7930 0029 www.rafaelvalls.co.uk ⇒ Recent works by **David Bachmann** 8–22/5

**REBECCA HOSSACK GALLERY**  
6A Conway St, W1, 020 7436 4899 www.r-h-g.co.uk ⇒ **Mixed Gallery Artists**, ongoing. **Please note that we have now moved**

**THE REDFERN GALLERY** 20 Cork St, W1, 020 7734 1732 www.redfern-gallery.com ⇒ **'Metavisual, Tachiste, Abstract Painting in England Today – 50 Years On'** 13/3–12/4 ⇒ **Paul Jenkins** 17/4–17/5 ⇒ **Paul Feiler** 22/5–21/6

**RICHMOND HILL GALLERY**  
26 Richmond Hill, TW10, 020 8940 5152 www.therichmondhillgallery.com ⇒ **'My Shakespeare'**. Paintings by **Philip Sutton RA** 17/5–10/6

**ROLLO CONTEMPORARY ART**  
17 Compton Terrace, N1, 020 7493 8383 www.rolloart.com ⇒ **'The Broken Wall'**. Giant sculptural objects created from polystyrene beads by **Aisling Hedgecock**, until 16/3 ⇒ **'Frank's Colour'**. Abstract paintings by **Frank Bowling RA** in the Friends Room at the Royal Academy, until 14/3 ⇒ Paintings by **Frank Bowling RA** curated by Rollo at the Arts Club, Dover St 2/5–1/6

**THE RUSSELL GALLERY**  
12 Lower Richmond Rd, SW15, 020 8780 5228 www.russell-gallery.com ⇒ **'Landscapes of the West Country'**. Show by **Malcom Ashman RBA ROI** 15/3–7/4 ⇒ **'Coastlines'**. Work by **Mary Jackson NEAC RWS** 12/4–5/5 ⇒ **'Eight**

**Points of the Compass'**. Exhibition of work by **Angela Findlay** 10/5–2/6

**SHERIDAN RUSSELL GALLERY**  
16 Crawford St, W1, 020 7935 0250 www.sheridanrussellgallery.com  
⇒ Contemporary sculpture and painting by established and emerging artists including **Richard H. Chapman**, **Mel Fraser**, **Michael Kucera**, **Barrington Tobin**, **Patricia Volk** and **Martha Winter**, ongoing

**THACKERAY GALLERY**  
18 Thackeray St, W8, 020 7937 5883 www.thackeraygallery.com ⇒ Evocative and lyrical landscapes based on the real and imagined land of Wales by **Eleri Mills** 13–30/3 ⇒ **'A Memorial Tribute: Sir Kyffin Williams RA'**. A retrospective of the artist's work from 1947 to 2006, 24/4–11/5 ⇒ **'India'**. Works on handmade paper and oils on canvas by **Marj Bond** 22/5–8/6

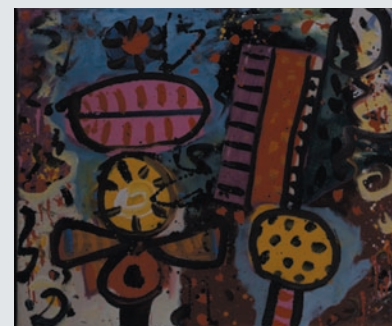
**THOMAS DANE GALLERY**  
11 Duke Street, St James's, SW1, 020 7925 2505 www.thomasdane.com ⇒ **'Alan Davie Paintings 1955–1967'** 7/2–3/3 ⇒ **'Very Abstract and Hyper Figurative'** 13/3–14/4 ⇒ **'Anya Gallaccio'** 24/4–26/5

**TURF GALLERY** 81 Westbourne Park Rd, W2, 020 7221 5215 www.turfgallery.tk ⇒ **'Internal Landscape'**. Abstract oil paintings and works on paper by **Erin Lawlor** 1–27/3 ⇒ **'Flowers: Abandoned'**. Photographs by young Polish artist **Matgorzata Markiewicz** 29/3–28/4 ⇒ Mixed media works by **Vicki Kerr** and **Katie Cudon** 3–28/5

**WADDINGTON GALLERIES** 11 Cork St, W1, 020 7851 2200 www.waddington-galleries.com ⇒ **Josef Albers**, until 24/3 ⇒ **Joe Tilson RA** 28/3–21/4

## ENGLAND

**BEDFORDSHIRE**  
**CECIL HIGGINS ART GALLERY**  
Castle Lane, Bedford, MK40, 01234 211222 www.cecilhigginsartgallery.org ⇒ **'The Romantic Tradition'**. Including artists **Palmer**, **Turner**,



From left to right  
'An Era of Solitude', 2006, by Mark Thompson at the Rebecca Hossack Gallery; 'Lilstock Beach', 2006, by Jenny Lagnado, at The Jersey Galleries; 'Philosophers and Globe', 2005, by Paul Rumsey, at the Piers Feetham Gallery; 'Balance the Pink', 1967, by Alan Davie, at the Thomas Dane Gallery

**Rossetti, Burne-Jones, Blake and Sutherland**, until 17/6

## BERKSHIRE

**THE JOHN MADJESKI ART GALLERY, READING MUSEUM** Blagrave St, Reading, RG1, 0118 939 9800 ⇒ 'Stanley Spencer: Painting Paradise'. The Stanley Spencer Gallery's complete collection, until 22/4

## STANLEY SPENCER GALLERY

High St, Cookham, SL6, 01628 471885 www.stanleyspencer.org.uk ⇒ Closed for refurbishment, until July (see above)

## CORNWALL

**LEMON STREET GALLERY** 13 Lemon St, Truro, TR1, 01872 275757 www.lemonstreetgallery.co.uk ⇒ Recent paintings by **Christine McArthur RSW** and exhibition of the late **Michael Finn**'s most prestigious work 10-31/3 ⇒ New work by leading ceramic artist **Jason Wason** 7-28/4 ⇒ Recent paintings by two of Scotland's leading painters **Matthew Draper** and **David Martin RSW** RGI 5-26/5

**TATE ST IVES** Porthmeor Beach, St Ives, TR20, 01736 796226 www.tate.org.uk/stives ⇒ 'Art Now Cornwall', until 3/5 ⇒ 'Francis Bacon in St Ives', until 13/5 ⇒ 'St Ives All Round: The Paintings of Bryan Pearce', until 13/5

## COUNTY DURHAM

**THE BOWES MUSEUM** Barnard Castle, DL12, 01833 690606 www.thebowesmuseum.org.uk ⇒ 'Fine and Fashionable: Lace from the Blackborne Collection', until 29/4 ⇒ 'Watercolours and Drawings from the Collection of Queen Elizabeth The Queen Mother' 19/5-2/9

## HARTLEPOOL ART GALLERY

Church Sq, Hartlepool, TS24, 01429 869706 www.destinationhartlepool.com ⇒ Well-known local artists **Bob Watson** and **Walter Parker**, until 8/4

## MUSEUM OF HARTLEPOOL

Maritime Ave, Hartlepool, TS24, 01429 860077 www.destinationhartlepool.com ⇒ 'Ingenious Contraptions'. Exhibition by **Maurice Collins**, until

25/3 ⇒ 'Tudor Lives'. Touring exhibition by Tyne and Wear Museums 7/4-17/6

## DERBYSHIRE

**TREGONING GALLERY** 4 Queen St, Derby, DE1, 01332 242427 www.tregoningfineart.com ⇒ 'Spring 2007'. Large selection of works including **David Shanahan**, **Emma Rodgers**, **Andrew Macara**, **Graham Ibbeson** and **Nick Hedderly**, March and April ⇒ Derbyshire landscapes by painter **Colin Halliday**, May

## DEVONSHIRE

**THE BROOK GALLERY** Fore St, Budleigh Salterton, EX9, 01395 443003 www.brookgallery.co.uk ⇒ Original prints of the 20th and 21st centuries, ongoing ⇒ 'Marc Chagall: Printmaker' 4-28/4

## MARINE HOUSE AT BEER

Fore St, Beer, EX12, 01297 625257 www.marinehouseatbeer.co.uk ⇒ 'Mike Bernard RI Solo Show' 24/3-6/4 ⇒ 'Affordable Art Fair Battersea' 15-18/3 ⇒ 'Affordable Art Fair Bristol' 17-20/5

## NORTHCOTE HOUSE GALLERY

University of Exeter, The Queen's Drive, Exeter, EX4, 01392 263584 www.exeter.ac.uk/fine.art ⇒ 'Lucian Freud Etchings'. Comprising eleven etchings made between 1985 and 2000, this exhibition brings together rarely seen works by an artist most renowned for his outstanding ability as a painter 23/4-22/6

## DORSET

**ALPHA HOUSE GALLERY** South St, Sherborne, DT9, 01935 814944 www.alpha-house.co.uk ⇒ Paintings by **June Berry**, **David Brayne** and **Richard Sorrell** and ceramics by **Jane Muir** and **Amanda Popham** 3/3-7/4 ⇒ Recent paintings by **Susan Caines** and ceramics by **Gabriele Koch** 14/4-12/5

## ESSEX

**GEEDON GALLERY** Jaggars, Fingringhoe, Colchester, CO3, 01206 728587/729151 www.geedongallery.co.uk ⇒ 'Seven Artists and Seven Sculptors'. Includes work by **Fred Cuming RA**, **Richard Pikesley**, **Ian Hay**, **Alex Lumley**, **Ruth Stage**,

**Jonathan Trowell**, **Margaret Glass**, **Gill Parker**, **Stuart Anderson** and others 1/3-15/4 (then by appointment)

## GLOUCESTERSHIRE

**CAMPDEN GALLERY** High St, Chipping Campden, GL55, 01386 841555 www.campdengallery.co.uk ⇒ 'Elsewhere'. Paintings and prints by **Matthew Burrows**, **James Fisher** and **Tom Hammick**, sculpture by **Denise de Cordova** 3-24/3 ⇒ 'Ornella Baratti Bon' 31/3-21/4 ⇒ 'Paul Wadsworth' 28/4-19/5

**FOSSE GALLERY** The Manor House, The Square, Stow-on-the-Wold, GL54, 01451 831319 www.fossegallery.com ⇒ 'Christopher Johnson: One Man Exhibition'. Powerful, expressive landscape paintings, encapsulating 'the spirit of the place' 25/2-17/3 ⇒ 'Recent Works by David Imms'. Colourful, dynamic new works of landscapes and figures, inspired by the West Country 29/4-19/5

## GALLERY PANGOLIN

Chalford, Stroud, GL6, 01453 886527 www.gallery-pangolin.com ⇒ 'Bronzes: Michael Cooper' 2/4-11/5

**MARTIN'S GALLERY** Imperial House, Montpellier Parade, Cheltenham, GL50, 01242 526044 www.martinsgallery.co.uk ⇒ Work by new gallery artists **John Harris**, **Michael Felmingham**, **Beth Fletcher**, **Serena Rowe** and **Alison Taylor**, until 3/3 ⇒ 'Contemporary British Sculpture'. **Sally Fawkes**, **Dan Fisher**, **John Huggins**, **Anita Mandl** and **Charlotte Mayer** 9/3-28/4 ⇒ 'RWS Spring Show: In Cheltenham' 11/5-30/6

## HAMPSHIRE

**ALRESFORD GALLERY** 36 West St, Alresford, SO24, 01962 735286 www.alresfordgallery.co.uk ⇒ 'Forty Artists Exhibiting Very Small Paintings', until 20/3 ⇒ **Seven by Seven** 22/4-15/5 ⇒ **Leslie Worth PPRWS NEAC** 20/5-19/6

## LACEWING FINE ART GALLERY

28 St Thomas St, Winchester, SO23, 01962 878700 www.lacewing.co.uk ⇒ Paintings, drawings and sculpture

from the 17th to 21st centuries. Artists include **Henri Gaudier-Brzeska**, **Augustus John RA**, **Sir William Orpen RA**, **William Frost RA**, **John White Abbott**, **Edgar Hanley**, **William Breakspeare**, **William Barraud**, **James Northcote** and **Adam Frans van der Meulen**, ongoing

## KENT

## GRAHAM CLARKE'S UP THE GARDEN STUDIO

Boughton, Monchelsea, Maidstone, ME17, 01622 743938 www.grahamclarke.co.uk ⇒ Etchings, watercolours, rare works, books and cards, 24-25/3, open 12-5pm

## MERSEYSIDE

**TATE LIVERPOOL** Albert Dock, Liverpool, L3, 0151 702 7400 www.tate.org.uk/liverpool ⇒ 'Centre of the Creative Universe: Liverpool and the Avant-Garde', until 9/9 ⇒ 'The Real Thing: Contemporary Art from China' 30/3-10/6 ⇒ 'Tate o8 Series: Ellen Gallagher' 21/4-28/8

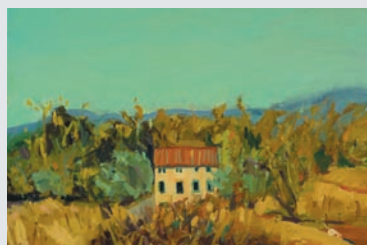
## NORTHUMBRIA

**UNIVERSITY GALLERY & BARING WING** Northumbria University, Sandyford Rd, Newcastle upon Tyne, NE1, 0191 227 4424 ⇒ Prints by **Hughie O'Donoghue** 9/3-20/4 ⇒ Prints by **Andrzej Jackowski** 9/3-20/4 ⇒ 'Into the 21st Century'. Paintings and drawings by **Leslie Marr** 27/4-1/6

## OXFORDSHIRE

**THE ASHMOLEAN MUSEUM** Beaumont St, Oxford, OX1, 01865 278000 www.ashmolean.org ⇒ 'Dürer to Friedrich: German Drawings', until 20/5 ⇒ 'Matthias Mansen: About the House'. Series of woodcuts exploring space and movement 23/5-27/8 ⇒ 'Treasures: Antiquities, Eastern Art, Coins and Casts', until 31/12/2008

**BOHUN GALLERY** 15 Reading Rd, Henley-on-Thames, RG9, 01491 576228 www.bohungallery.co.uk ⇒ 'Reflections of Venice'. Recent paintings by **Victoria Crowe RSA**, until 10/3 ⇒ '40 Years of Prints'. Exciting collection of images by **Donald Hamilton Fraser RA** 19/3-22/4



From left to right 'Miró's House', 2006, Christopher Johnson, at the Fosse Gallery; 'Delstree', 2005, by Matt Clarke, at the Tregoning Gallery; 'Morning in San Polo', 2006, by Michael Felmingham, at Martin's Gallery; 'Three Ships', 2006, by Tom Hammick, at the Campden Gallery

**CHRIST CHURCH PICTURE GALLERY**  
Christ Church, Oxford, OX1, 01865  
276172 www.chch.ox.ac.uk/gallery  
⇒ 'Multiple Masters: French Prints  
After Paintings, 1700–1900', until 15/4  
⇒ 'Out of the Shadows: New Works  
by Malcolm Sparks' 22/4–13/5 ⇒  
'The Lure of the Antique'. Drawings  
from the sixteenth and seventeenth  
centuries with artists **Rubens, Claude,  
Naldini and Pirro Ligorio** 20/4–7/8

**ELIZABETH HARVEY-LEE**  
1 West Cottages, North Aston, OX25,  
01869 347164 ⇒ Original prints from  
the fifteenth to twentieth centuries,  
**Claude, Sisley, Schmidt-Rottluff,  
Whistler, Bone, Cameron, McBey,  
Seaby, Walcot, Wyllie** ⇒ London  
Original Print Fair 25–29/4

**RUTLAND**  
**ORANGE STREET GALLERY**  
8–10 Orange St, Uppingham, LE15,  
01572 822919 www.orangestreetgallery.  
com ⇒ 'Through the Mesh'.  
Contemporary screen prints by  
Artizan Editions, with work by **Brian  
Rice, Sally McGill, Richard Walker,  
Geoffrey Robinson and Martyn  
Brewster** 11–31/3 ⇒ 'Shirley Trevena  
Watercolours'. Still life and floral  
watercolour paintings 5/5–5/6

**SHROPSHIRE**  
**BRIDGEGATE GALLERY** Church Lane,  
Sheriffhales, TF11, 01952 461667/07967  
105172 www.bridgategallery.co.uk  
⇒ Contemporary British and European  
art featuring **Jacques Deshaies, Lélia  
Pissarro, Jenny Ryrie and Brian  
Steventon**, with glass sculpture by  
**Amanda Brisbane** ⇒ The Affordable  
Art Fair, Bristol 18–20/5

**SOMERSET**  
**ADAM GALLERY** 13 John St, Bath,  
BA1, 01225 480406 www.adamgallery.  
com ⇒ New work by **William Selby**  
31/3–20/4

**BEAUX ARTS BATH** 12–13 York St,  
Bath, BA1, 01225 464850 www.  
beauxartsbath.co.uk ⇒ New work by  
**Nathan Ford**, new sculpture by **Paul  
Amey** and new ceramics by **Ashraf  
Hanna** 12/3–14/4 ⇒ New sculpture

by **Helen Denerley** and new ceramics  
by **Tony Laverick** 23/4–19/5 ⇒ New  
paintings by **Nicola Bealing** and new  
ceramics by **Masamichi Yoshikawa**  
28/5–23/6

**ROYAL WEST OF ENGLAND  
ACADEMY** Queen's Rd, Clifton,  
Bristol, BS8, 0117 973 5129 www.rwa.  
org.uk ⇒ 'Open Sculpture', until  
11/3 ⇒ Selected works by **Peter Ford  
RWA** 2–27/3 ⇒ 'BP Portrait Award'.  
Contemporary portraiture selected  
from open submission by the National  
Portrait Gallery 25/3–20/5

**SUFFOLK**  
**WILDWOOD GALLERY**  
40 Churchgate St, Bury St  
Edmunds, IP33, 01284 752938 www.  
wildwoodgallery.co.uk  
⇒ Affordable, contemporary paintings,  
original prints and sculpture, by  
established and new artists, ongoing  
⇒ 'Spring Show'. New work by gallery  
artists 6/3–7/4

**SURREY**  
**GUILDFORD HOUSE GALLERY**  
155 High St, Guildford, GU1, 01483  
444742 www.guildfordhouse.co.uk  
⇒ 'Godalming and Headley Artists',  
until 17/3 ⇒ 'Memories of Guildford'  
24/3–19/5 ⇒ Country and townscape  
paintings by **Charles Sanderson**  
26/5–16/6

**WARWICKSHIRE**  
**COMPTON VERNEY** Compton  
Verney, CV35, 01926 645500 www.  
comptonverney.org.uk ⇒ 'Opulence  
and Anxiety: Landscape Paintings  
from The Royal Academy' 24/3–10/6  
⇒ 'Kate Whiteford: Airfield'. A project  
in the landscape 24/3–10/6

**WEST MIDLANDS**  
**THE BARBER INSTITUTE OF FINE  
ARTS** University of Birmingham,  
Edgbaston, Birmingham, B15, 0121  
414 2946 www.barber.org.uk ⇒  
'The Parrot in Art: From Dürer  
to Elizabeth Butterworth', until  
29/4 ⇒ 'Flight of Fancy: Birds and  
Winged Creatures in Art', until 6/5  
⇒ 'Encounters: Travel and Money in  
the Byzantine World', until 14/1/08

**NUMBER NINE THE GALLERY**  
9 Brindley Place, Birmingham, B1, 0121  
643 9099 www.numberninethegallery.  
com ⇒ New work by **Vladimir  
Karnachev**, until 4/3 ⇒ New work by  
**Melissa Mailer-Yates** in association  
with the MS Society 8–31/3

**WEST SUSSEX**  
**PALLANT HOUSE GALLERY**  
9 North Pallant, Chichester, PO19,  
01243 774557 www.pallant.org.uk ⇒  
'Art for the Classroom: School Prints  
1946–49', until 25/3 ⇒ 'Bomberg  
and the Borough Group', until 1/4  
⇒ 'Poets in the Landscape: The  
Romantic Spirit in British Art'  
31/3–10/6

**WEST YORKSHIRE**  
**WAKEFIELD ART GALLERY**  
Wentworth Terrace, Wakefield, WF1,  
01924 305796 www.wakefield.gov.uk  
⇒ 'Wagging Tongues'. Featuring  
the work of **Shelley Byatt, Adrienne  
Craddock and Marjan Wouda**,  
until 15/4 ⇒ 'Inspired 2'. Open art  
exhibition with work on the subject  
of 'Moving', in recognition of the  
gallery's imminent move to The  
Hepworth, Wakefield 28/4–27/5

**YORKSHIRE SCULPTURE PARK**  
West Bretton, Wakefield, WF4,  
01924 832631 www.ysp.co.uk ⇒  
Unprecedented range of work by  
**Andy Goldsworthy** 31/3–6/1/08 ⇒  
'Sometimes The Things You Touch  
Come True'. Structures, sculptures  
and installations by **Leo Fitzmaurice**  
31/3–10/6 ⇒ 'Visiting Artist: **Simon  
Armitage** 2007', throughout the year

**WORCESTERSHIRE**  
**RICHARD HAGEN** Stable Lodge,  
Broadway, WR12, 01386 853624/858561  
www.richardhagen.com ⇒ 'Around  
Britain's Coastline'. With artists  
**George Birrell, Norman Edgar, Mary  
Fedden RA, James Fullarton and  
Sasha Harding** 9–23/6

**YORKSHIRE**  
**THE HENRY MOORE INSTITUTE**  
74 The Headrow, Leeds, LS1, 0113 246  
7467 www.henry-moore-fdn.co.uk  
⇒ 'Figuring Space: Sculpture/'

'Furniture from **Mies to Moore**', until  
1/4 ⇒ 'Modelling **Charlotte Perriand**:  
A Project by **Sadie Murdoch**' 3/3–27/5  
⇒ 'Towards a New **Laocoon**' 13/5–12/8

## SCOTLAND

**BOURNE FINE ART (Part of the  
Fine Art Society)**  
Dundas St, Edinburgh, EH3, 0131 557  
4050 www.bournefineart.com ⇒  
'Ten Important Scottish Paintings'.  
Including **John Knox, Alexander  
Nasmyth, D.Y. Cameron, Henry  
Raeburn RA and Arthur Melville**,  
until 10/3 ⇒ 'Select: Contemporary'.  
Featuring **Rob and Nick Carter,  
Keith Grant, Rob Davies, John  
Byrne and John McLean** 16/3–5/4  
⇒ 'The Andrew McIntosh Patrick  
Collection' April

## WALES

**THE ALBANY GALLERY**  
74b Albany Rd, Cardiff, CF24, 02920  
487158 www.albanygallery.co.uk ⇒  
A juxtaposition of quirky and serious  
interpretations of Welsh life by **Viv  
Luxton and Andrew Douglas Forbes**  
16/3–7/4 ⇒ 'Wales: Its Sublime  
Landscape'. Work by **Rob Piercy**  
13/4–5/5 ⇒ New work by **Leonard  
Beard, Nick Holly and David Knight**  
11/5–2/6

**MARTIN TINNEY GALLERY**  
18 St Andrew's Crescent, Cardiff,  
CF10, 02920 641411 www.artwales.  
com ⇒ New paintings by award-  
winning figurative artist **Sally Moore**  
28/2–24/3 ⇒ 'Small IV'. Small works  
by over 40 leading and emerging  
artists of Wales 28/3–14/4 ⇒ New  
figurative paintings by expressionist  
artist **Kevin Sinnott** 18/4–12/5

**MOMA WALES**  
Heol Penrallt, Machynlleth, Powys,  
SY20, 01654 703355 www.momawales.  
org.uk ⇒ 'Stone. Plate. Grease.  
Water'. International contemporary  
lithography 12/3–12/5 ⇒ 'Angel  
in Machynlleth'. Work by **Angel  
Orensanz** 31/5–21/7



From left to right  
'The Return', 2006, by Victoria Crowe RSA, at  
the Bohun Gallery; 'Les Bords du Loing, près  
de Saint-Mammès', 1896, by Alfred Sisley,  
at Elizabeth Harvey-Lee; 'Untitled', 2007,  
by Melissa Mailer-Yates, at Number Nine  
The Gallery; 'Punch and Judy', 1946, by L.S.  
Lowry, at Pallant House Gallery